

# PC-Regen-compact

USER GUIDE



## NOTICE

The information contained in this document is believed to be accurate in all respects but is not warranted by Mitel Networks™ Corporation (MITEL®). Mitel makes no warranty of any kind with regards to this material, including, but not limited to, the implied warranties of merchantability and fitness for a particular purpose. The information is subject to change without notice and should not be construed in any way as a commitment by Mitel or any of its affiliates or subsidiaries. Mitel and its affiliates and subsidiaries assume no responsibility for any errors or omissions in this document. Revisions of this document or new editions of it may be issued to incorporate such changes.

No part of this document can be reproduced or transmitted in any form or by any means - electronic or mechanical - for any purpose without written permission from Mitel Networks Corporation.

## TRADEMARKS

The trademarks, service marks, logos and graphics (collectively "Trademarks") appearing on Mitel's Internet sites or in its publications are registered and unregistered trademarks of Mitel Networks Corporation (MNC) or its subsidiaries (collectively "Mitel") or others. Use of the Trademarks is prohibited without the express consent from Mitel. Please contact our legal department at [legal@mitel.com](mailto:legal@mitel.com) for additional information. For a list of the worldwide Mitel Networks Corporation registered trademarks, please refer to the website: <http://www.mitel.com/trademarks>.

© Copyright 2018, Mitel Networks Corporation

All rights reserved

---

# CONTENTS

<b>1</b>	<b>INTRODUCTION .....</b>	<b>1</b>
<b>2</b>	<b>HOW TO USE PC-REGEN-STARTER .....</b>	<b>1</b>
2.1	INSTALLATION	1
2.2	HELP MENU	1
2.3	TARGET TYPE	2
2.4	SOURCE TYPE	2
2.5	REGENERATION PATH	2
2.6	ADD EXTRA PRINT COMMANDS TO BATCH FILE	3
2.7	SCRIPT FILE	4
2.8	EXECUTION BUTTONS	4
2.9	CLEAR LOG BUTTON	5
2.10	SOURCE VERSION BUTTON	5
<b>3</b>	<b>REGENERATION.....</b>	<b>6</b>
3.1	REGENERATION PROCEDURE	6

# 1 INTRODUCTION

PC-Regen-compact consists of two executables:

1. *PC-Regen-compact.exe*  
This is a shell program that performs the main tasks such as regeneration, syntax check, and generation of batch files.
2. *PC-Regen-starter.exe*  
This is the GUI front end that calls PC-Regen-compact.

## 2 HOW TO USE PC-REGEN-STARTER

### 2.1 INSTALLATION

Download the file *PC-Regen-compact-setup.msi* file, run it, and follow the instructions. The whole package including PC-Regen-compact and PC-Regen-starter will be installed.

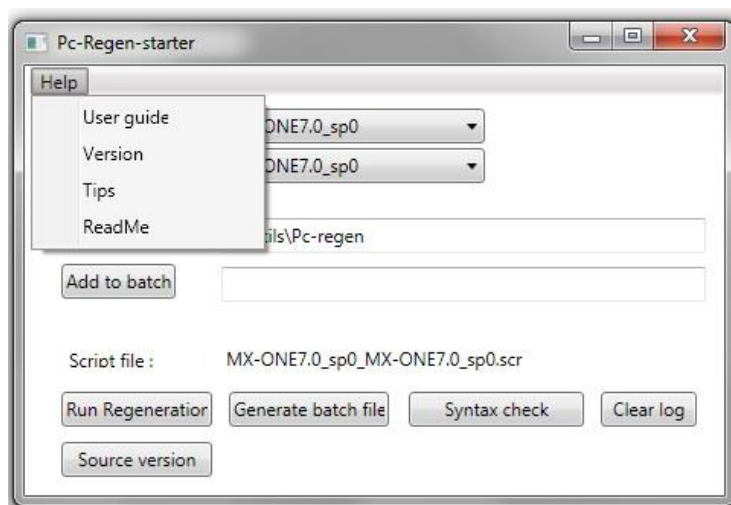
PC-Regen-starter is a tool that uses PC-Regen-compact. It collects data from the user and sends it to PC-Regen-compact for processing.

The procedure for a regeneration (PC-Regen Upgradation) is:

1. Create a batch file to use for data extraction.
2. Send the batch file to extract data or send the extracted data to the batch file.
3. Regenerate the data.
4. Send the regenerated data to the target system.

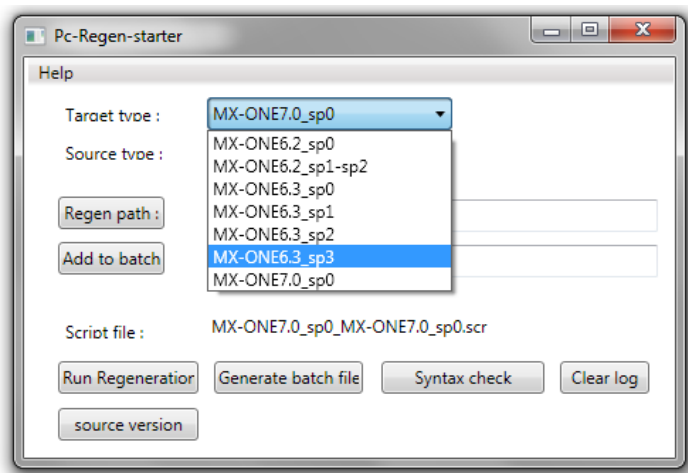
### 2.2 HELP MENU

<b>User guide</b>	opens this document in your default PDF viewer.
<b>Version</b>	opens a shell and displays the current version of your PC-Regen-compact.
<b>Tips</b>	opens (in your default PDF viewer) a document containing user tips and useful notes.
<b>ReadMe</b>	opens a text file containing history of updates for PC-Regen-compact.



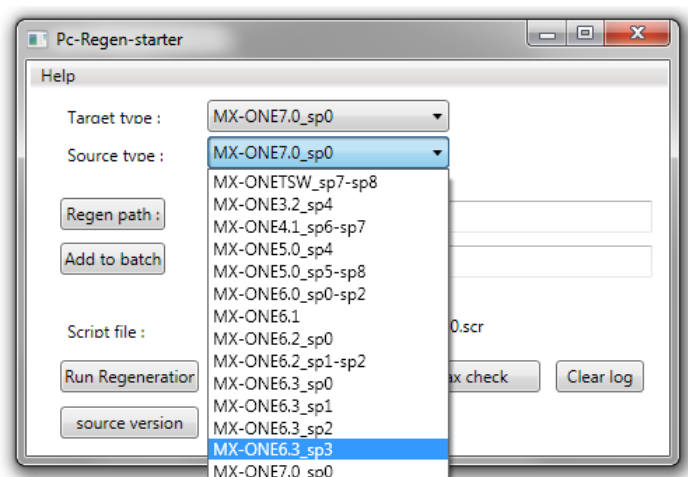
## 2.3 TARGET TYPE

For selecting the **Target type**, click the **Target type** combo box and select the type of target system. When a target is selected, the Source type combo box becomes available.



## 2.4 SOURCE TYPE

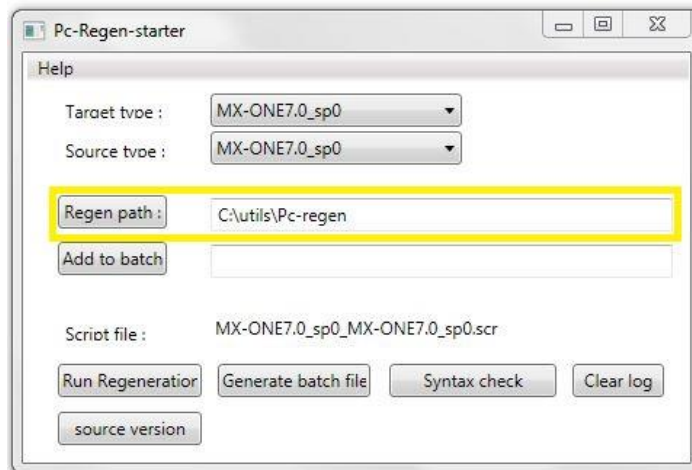
For selecting the **Source type**, click the **Source type** combo box and select the type of source system.



## 2.5 REGENERATION PATH

To select the Regen path, do the following:

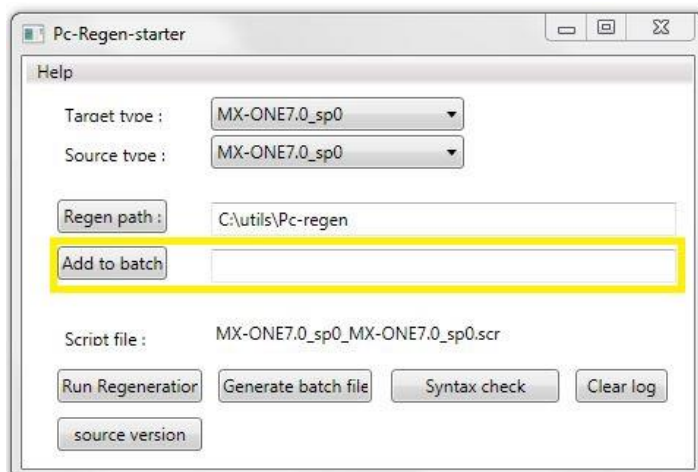
1. Click the **Regen path** button.
2. In the **Regen path**, specify the path for regeneration.
3. Select/create the desired path from the folder dialogue presented. Below this path there must be a **.../source** and a **.../target** directory present. The data extracted from MX-ONE shall be placed under the **.../source** directory.



## 2.6 ADD EXTRA PRINT COMMANDS TO BATCH FILE

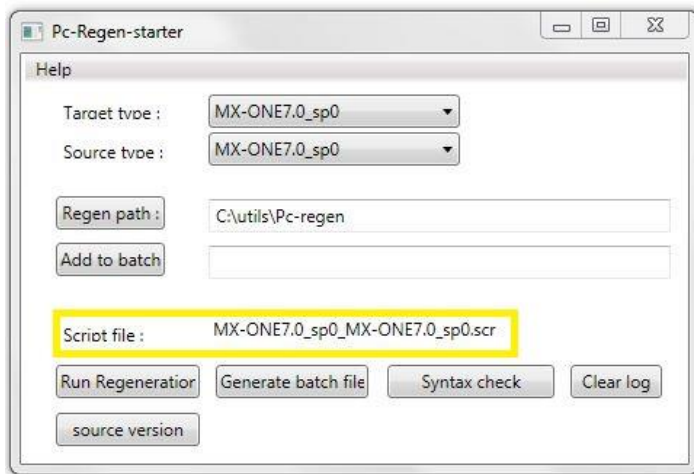
This feature allows you to add extra print commands to the generated `data_gen.batch` file.

Create a file containing the commands you want to add. Then, select this file using the **Add to batch** button. The content of this file will then be added last in the `data_gen.batch` file.



## 2.7 SCRIPT FILE

This **Script file** displays the currently selected script file that will run when you click an execution button.



## 2.8 EXECUTION BUTTONS

The three execution buttons control the task execution.

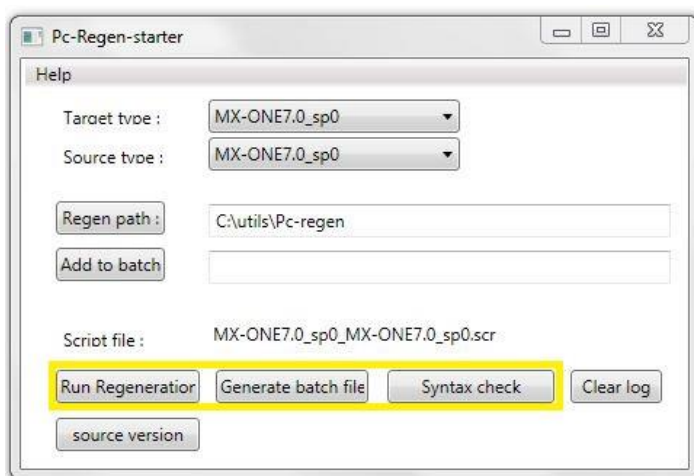
The **Run regeneration** button starts the regeneration and put the result to the `../target` directory under the regen path.

The **Generate batch files** button generates a `data_gen.batch` file and put it at the regen path directory. If you specify a file in the **Add to batch** field, the file is appended at the end of `data_gen.batch`.

Click the **Syntax check** button to perform a syntax check.

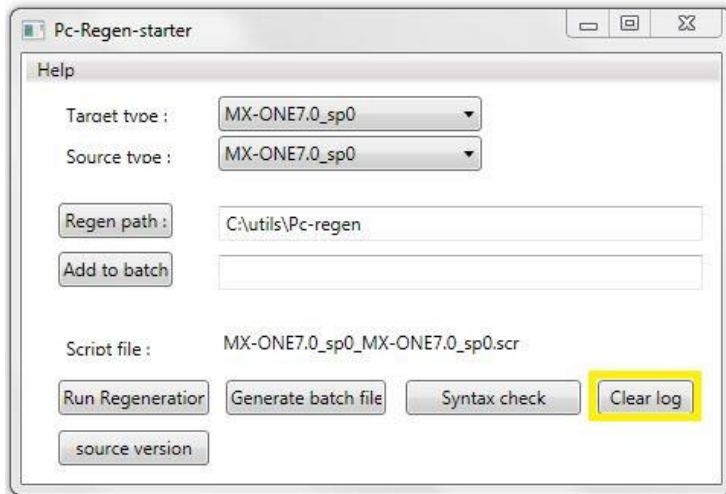
When the operation is ready, all 3 buttons will open a new window containing the `ERROR.LOG` file.

All the three buttons will open a new window containing the `ERROR.LOG` file after the operation is completed.



## 2.9 CLEAR LOG BUTTON

Click the **Clear log** button to remove the *ERROR.LOG* file and the next operation will be logged as the first in the file.



## 2.10 SOURCE VERSION BUTTON

Click this button to open the file *ts\_about* stored in the *../source* directory. This option helps you to ensure that the correct script file is used.





## 3 REGENERATION

### 3.1 REGENERATION PROCEDURE

In this procedure, all communication with MX-ONE is done through an SSH shell.

1. Select a target using the **Target type** combo box.
2. Select a source system using the **Source type** combo box.
3. Specify a regeneration path. This path must contain a *lsource* and a *ltarget* directory. These directories can be created for PC-Regen-starter or the general file manager.
4. Create a batch file by clicking the **Generate batch files** button. This file is sent to the source MX-ONE system to generate print data **data\_gen.batch**. This step also generates the **gjtsp.batch**, and the **pu\_add\_info.batch**, **racep2.batch** and **scexp2.batch** files. These files are used by PC-Regen-compact at data collection time.



**Note!:** You can add custom printouts to `data_gen.batch` by creating the commands as a separate file and selecting the file using the **Add to batch** button.

5. Zip all the files generated in step four to a zipped file. That is, **data\_gen\_file.zip**.
6. Move the file that was created in step five to a separate directory on the source MX-ONE system, that is, **/tmp/pcregenData**, and unzip the file.
7. Run the file to collect print data. On the MX-ONE source system, go to the directory **/tmp/pcregenData** and run the following command:

```
source ./data_gen.batch | tee logFile.txt. This will collect the print data to this directory.
```

8. Zip all collected data from this directory into a zipped file.  
`/tmp/pcregenData # zip -j pcregenSource.zip *`



**Note!:** The `-j` option zips the files without directory information.

9. Move the **pcregenSource.zip** file to your PC on to the: **/source** directory below your regeneration path and unzip it.
10. Perform the actual regeneration. From the PC-Regen-starter program with, the proper **Target type**, **Source type**, and Regen paths selected, click the **Run Regeneration** button. This creates the initiation files to be sent to you target MX-ONE.
11. Zip all files in the **.../target** directory of the regeneration path you specified to a single file.  
That is, **pcregenTarget.zip**.
12. Move the file that was created in step 11 to a separate directory on your target MX-ONE system that is, **/tmp/upgradeData**. Unzip the file: `tmp/upgradeData # unzip pcregenTarget.zip`
13. Run the generated batch file **REGENCMD.TXT** using the command:

```
tmp/upgradeData # mdsh -c source REGENCMD.TXT | tee upgradeLog.txt
```

Your system will now run using the regenerated data. It is recommended that you do a system backup by running the following command:

```
tmp/upgradeData # data_backup.
```